

# **SAFETEST**

## **Test & Tag Services**





# ABOUT US

Safe Test are experts when it comes to electrical safety testing. Safe Test provides a broad range of services, including appliance test and tag, three phase testing, microwave testing, and portable RCD testing. We work with various industries, from mining and construction to offices, schools, and hospitality, ensuring that every workplace meets Australian AS/NZS 3760 electrical safety standards.





# Three-phase testing

Three-phase testing, also known as tri-phasic testing, is a software testing approach that involves testing an application or system in three distinct stages: unit testing, integration testing, and system testing. The first stage, unit testing, involves testing individual components or units of code to ensure they function correctly.



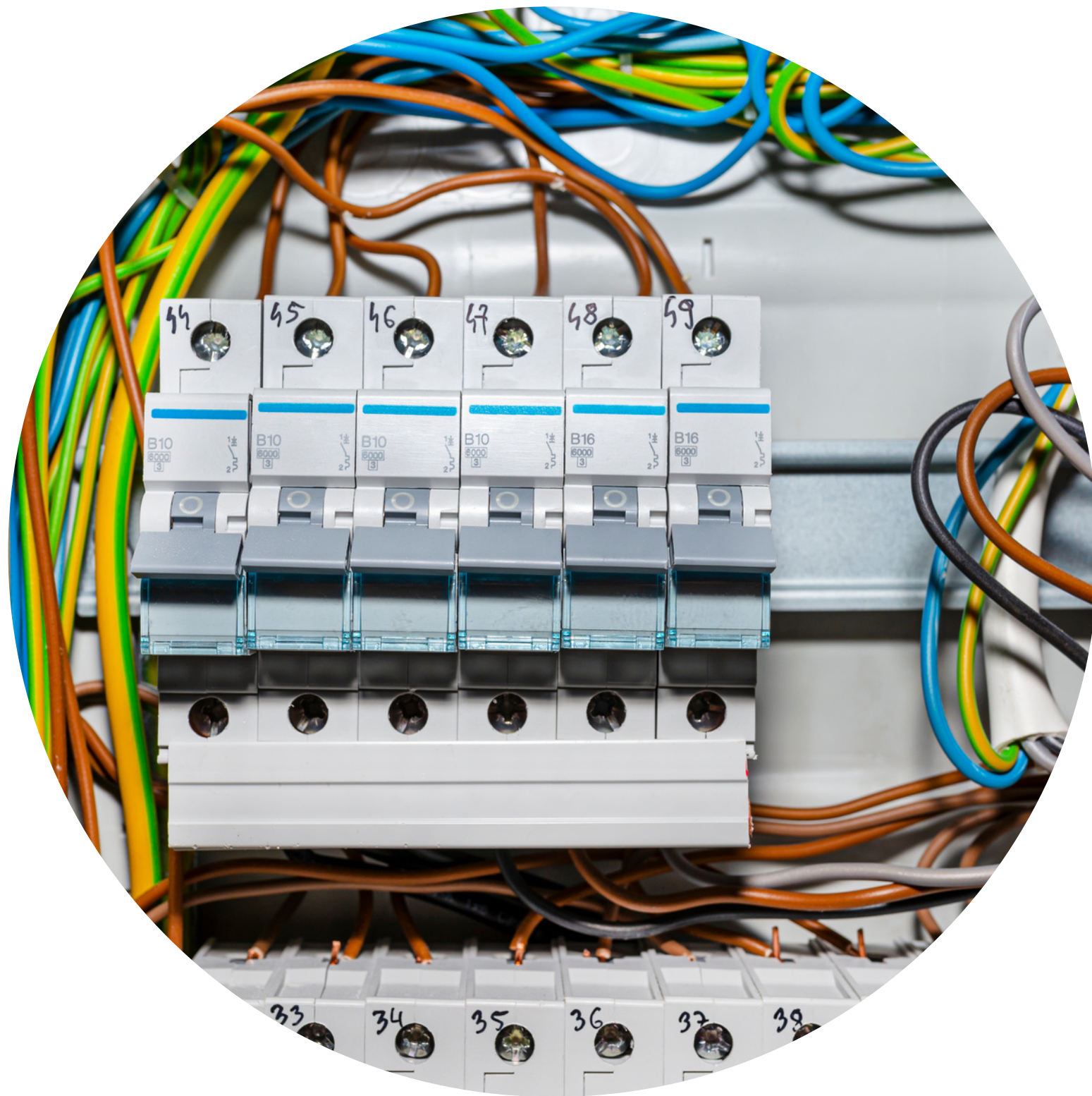




# Portable RCD

Portable RCD testing is a crucial process in ensuring electrical safety in various settings such as homes, offices, and industrial sites. RCDs (Residual Current Devices) are devices that protect people from electric shock by disconnecting the power supply in case of a current leakage. Portable RCD testing involves testing these devices to ensure that they are functioning properly and providing adequate protection.





# Single phase

Single phase testing is used to determine the performance of electrical equipment or systems, such as motors, transformers, and lighting circuits. It is also used to diagnose electrical problems and ensure that equipment is operating safely and efficiently. Single phase testing involves a range of testing methods, including insulation resistance, earth continuity, polarity, and continuity testing.

# CONTACT US

Address: Adelaide, Australia

Phone No: 0407 545 521

Business E-mail: [info@safetest.com.au](mailto:info@safetest.com.au)

**[www.safetest.com.au](http://www.safetest.com.au)**





A close-up photograph of a person's hand holding a red probe connected to a terminal block. In the foreground, a yellow digital multimeter is visible, with its dial set to the 'OFF' position. The background is blurred, showing more cables and equipment. The text 'THANK YOU' is overlaid in a large, bold, black serif font across the center of the image.

**THANK YOU**